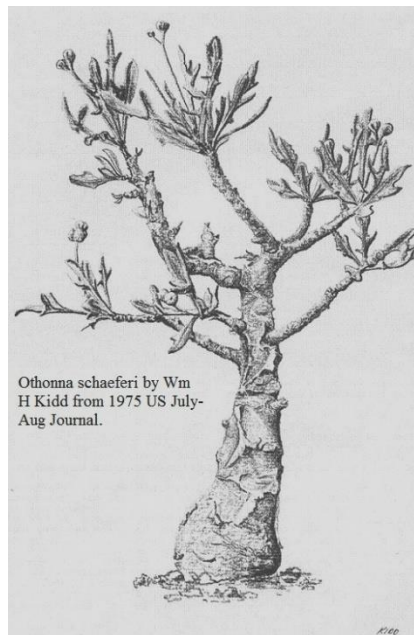
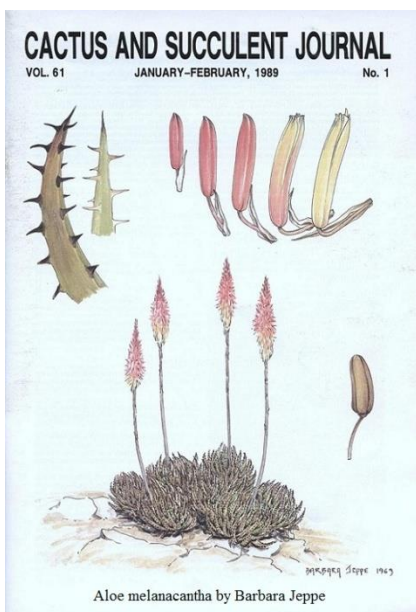
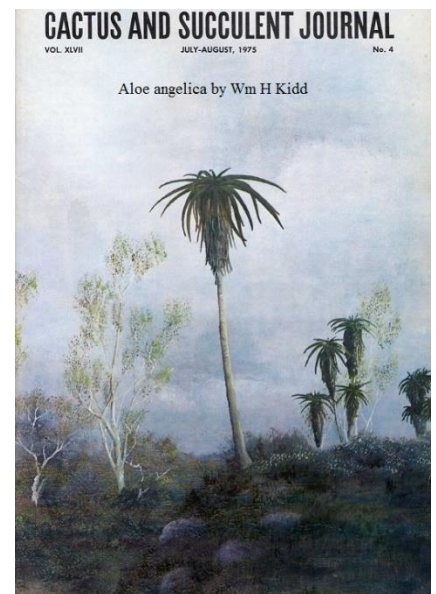
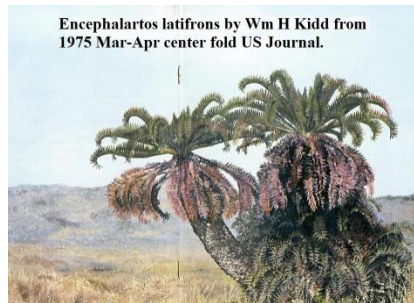
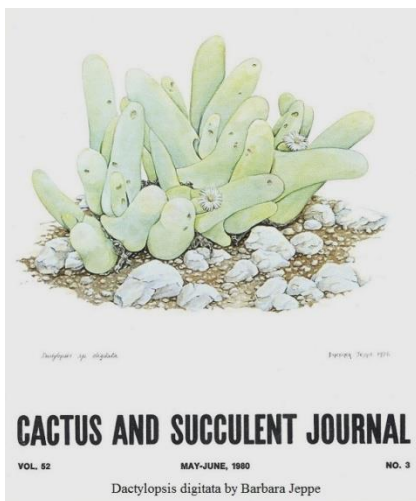
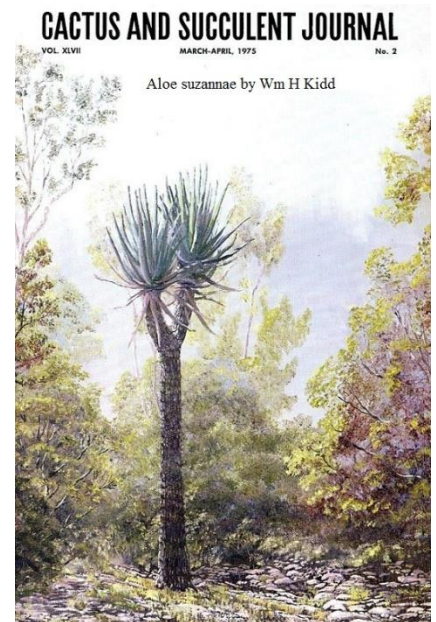
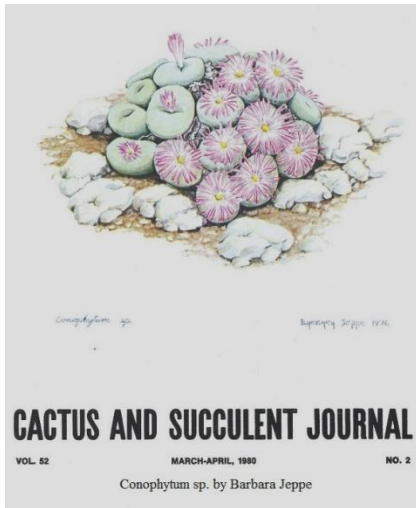
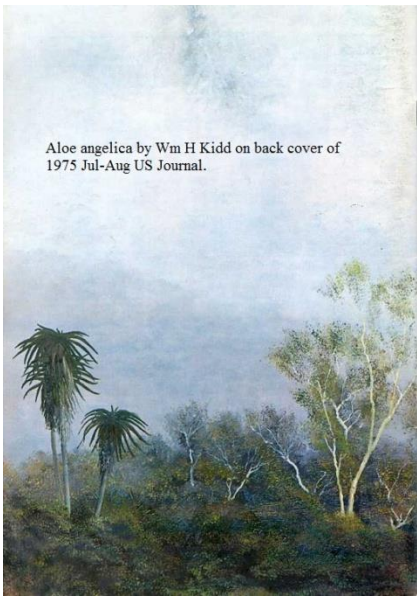


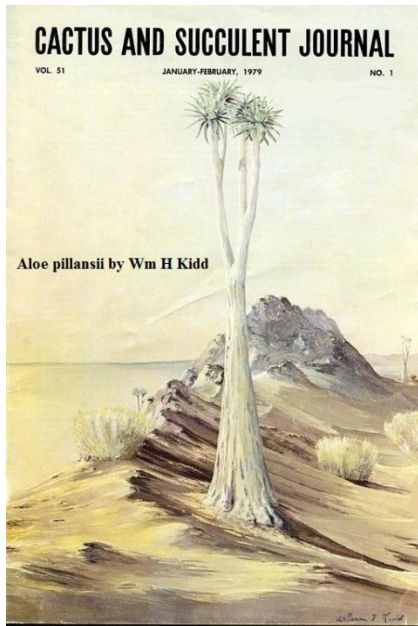
US Journal Art Works by various Artists - 2

"Copyrighted material on this site is used in accordance with 'Fair Use', for the purpose of providing dedicated cactus and other succulent plant personalities, and will be removed at the request of copyright owner(s). As a non-profit, non-revenue producing site, the CSSA Archives provides its content as a free, educational and informative service for its readers. Copywritten content on this site may not be further used for profitable purposes without the expressed written permission and consent of the copyright owner(s)."





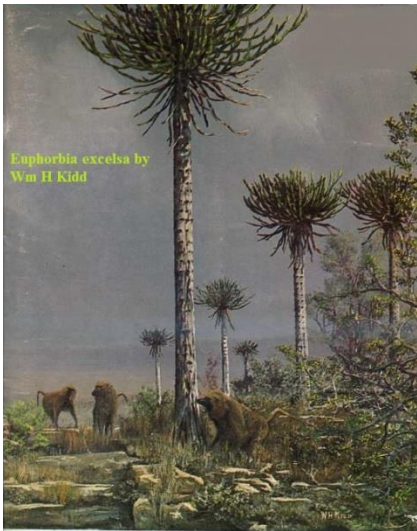
Aloe angelica by Wm H Kidd on back cover of 1975 Jul-Aug US Journal.



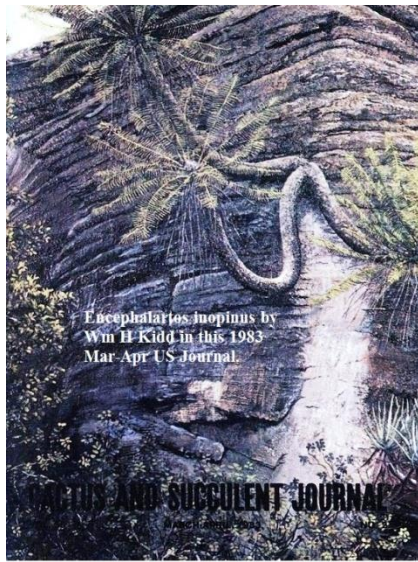
Aloe pillansii by Wm H Kidd



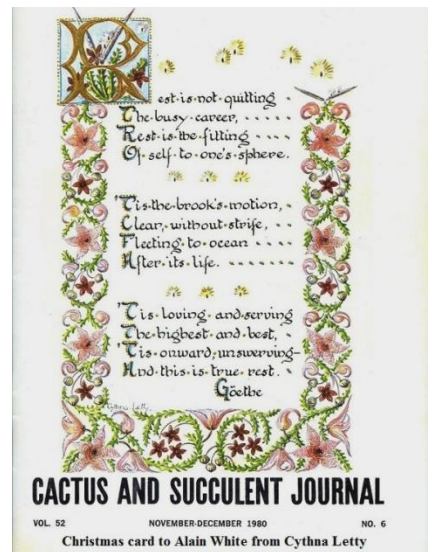
Hdenium obesum var. multiflorum



Euphorbia excelsa by Wm H Kidd

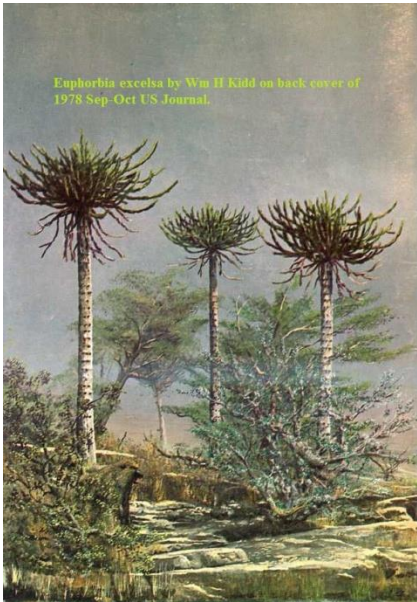


Eucephalartos inopinus by Wm H Kidd in this 1983 Mar-Apr US Journal.

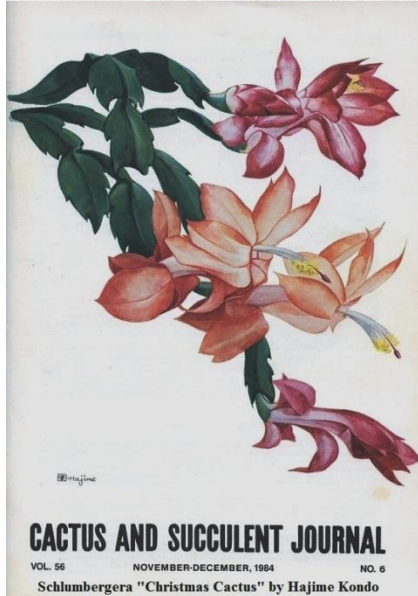


CACTUS AND SUCCULENT JOURNAL

VOL. 52 NOVEMBER-DECEMBER 1980 NO. 6
Christmas card to Alain White from Cythna Letty



Euphorbia excelsa by Wm H Kidd on back cover of 1978 Sep-Oct US Journal.



CACTUS AND SUCCULENT JOURNAL

VOL. 56 NOVEMBER-DECEMBER, 1984 NO. 6
Schlumbergera "Christmas Cactus" by Hajime Kondo



Stenocactus sp. by Jose Roberto Martinez Romero



CACTUS AND SUCCULENT JOURNAL
VOL. 62 JANUARY-FEBRUARY 1990 No. 1

Selenicereus wittii by Margaret Mee

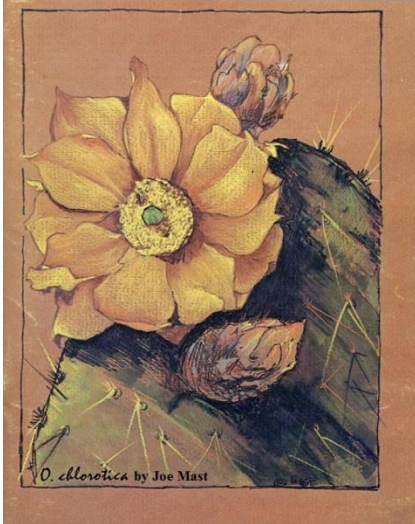


From 1967 US Journal, page 141, by Henry R. Mockel.

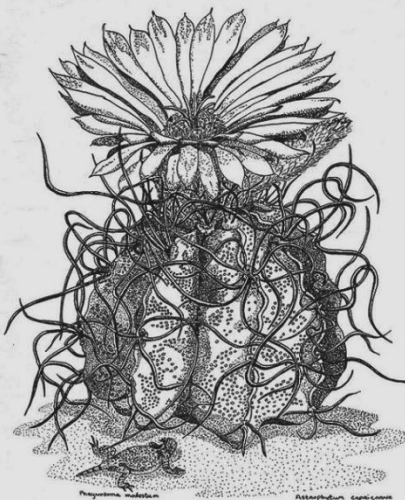
Yucca schottii Rozei ex Orig. "The Mojave Yucca", occurs from Baja California north through San Diego, Riverside, and San Bernardino Counties in California into Arizona and southern Nevada. It often grows in association with *Yucca whipplei*, *Y. brevifolia*, and *Y. baccata*. At one time *Y. schottii* was thought to be an arborescent form of *Y. baccata*; for years it went under the now generally discarded name, *Yucca mojavensis*. The trunklike branches can attain a height of 6 or 7 feet. The leaves are yellow green, about 2 feet long, rigid, with coarse, curved fibers on the margins. It was named "schottii" because of its resemblance to *Agave schottiana* with its filiferous margins. The "Mojave Yucca" is exceedingly slow growing in its natural habitat. It is found in intermontane valleys and foothills from near sea level to 6,000 feet, and usually flowers in April and May. The yuccas have long served the Indians as a source of fiber and of soap.

CACTUS AND SUCCULENT JOURNAL
VOL. 51 NOVEMBER-DECEMBER, 1979 NO. 6

CACTUS AND SUCCULENT JOURNAL
VOL. 51 SEPTEMBER-OCTOBER, 1979 NO. 5



CACTUS AND SUCCULENT JOURNAL
VOL. 1 NOVEMBER-DECEMBER, 1978 NO. 6



Astrophytum capricorne by Connie Minnich

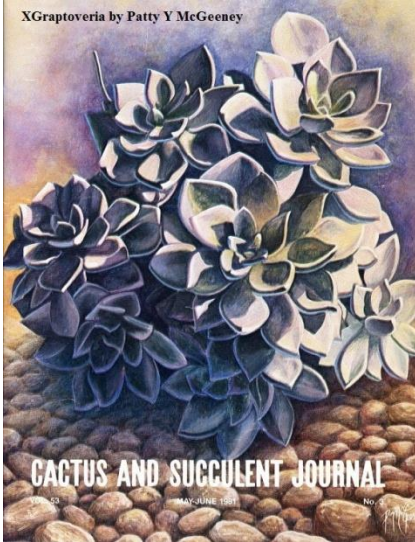


CALIFORNIA DESERT PLANT LIFE: PART II

Portraits by HENRY R. MOCKEL
Words by CHARLES GLASS

From 1967 US Journal, page 180.

Opuntia acanthocarpa Engelm. & Bigelow. "The Buckhorn Cholla", is sometimes difficult to distinguish from the "Silver Cholla", *Opuntia echinocarpa*. The flowers of *O. acanthocarpa* are somewhat larger than those of *O. echinocarpa*, and the tubercles are longer in relation to their width than those of *O. echinocarpa*. It also differs in its tall, open manner of growth, growing to 8 or 10 feet in height. It is mainly an Arizona species, but it comes as far west as Twentynine Palms, near Joshua Tree National Monument. The flowers are large and attractive, greenish-yellow with a reddish tinge. The sharp spines are shrouded with light tan sheaths. The fruit also are spiny, hence the name "acanthocarpa".



CACTUS AND SUCCULENT JOURNAL
VOL. 51 MAX-JUNE 1981 NO. 3



CALIFORNIA DESERT PLANT LIFE: PART I

Portraits by HENRY R. MOCKEL
Words by CHARLES GLASS

From 1967 US Journal, page 140.

Opuntia basilaris Engelm. & Bigelow. "The Beaver Tail Cactus", is found in both the Mojave and Colorado Deserts. Everything about this plant is colorful: its satiny, orchid-colored flowers; its velvety, blue bodies tinged purple; and even its type locality, "from Cactus Pass down the valley of the Bill Williams River". The species is spineless, but the plant is covered with orange-brown glochids... even on the roots! "Basilaris" means pertaining to the base, and refers to the basal habit of branching. *O. basilaris* grows in some areas that get several degrees of frost. In dry periods the pads become quite shrunken and wrinkled. Even though it grows in areas that often receive rain in the winter, in collections it should be kept quite dry in the winter months to avoid rot.



From 1967 US Journal, page 181, by Henry R. Mockel.

Echinocereus triglochidiatus var. *mojavensis* (Engelm. & Bigelow) L. Benson. "The Mojave Mound Cactus". This species forms large mounds, several feet in diameter with hundreds of heads. The spines are 8 to 12 in number (rarely only three as the complex name implies); they are 1 to 2 inches long, curved and twisted. The ribs are markedly tuberculate. The other major California *Echinocereus* is *E. engelmannii*, which can be distinguished by its more slender, elongated growth; more open clusters, rather than compact mounds; straighter and heavier, varicolored spines. The "claret-cup" flowers of the Mojave hedgehog are brick red, shading to green at the base, and they remain open day and night for several days. The flowers of Engelm. hedgehog are larger, satiny, ranging into the purple, and open only during the day. *E. triglochidiatus* var. *mojavensis* is generally found at higher elevations, above 4,000', ranging from the mountains above San Bernardino east into Utah, Arizona, and Nevada.

CACTUS AND SUCCULENT JOURNAL

VOL. 53 JANUARY-FEBRUARY 1981 NO. 1

Aloe suprafoliata by Ken Niles



CACTUS AND SUCCULENT JOURNAL

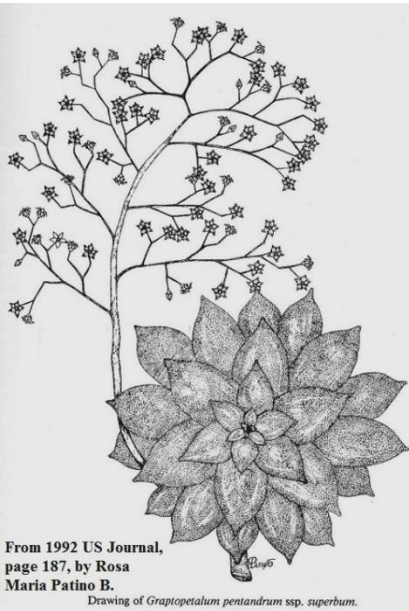
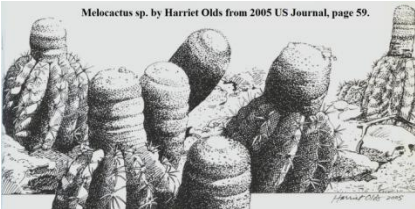
VOL. 53 MARCH-APRIL 1981 No. 2

Astrophytum myriostigma by Helen O'Gorman



Helen O'Gorman

Melocactus sp. by Harriet Olds from 2005 US Journal, page 59.



From 1992 US Journal, page 187, by Rosa Maria Patiño B.

Drawing of *Graptopetalum pentandrum* ssp. *superbum*.

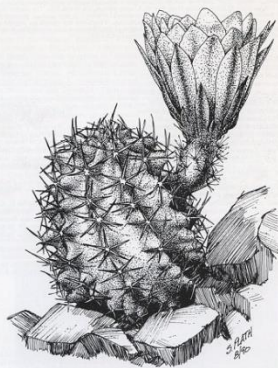


Sedum multiflorum from 1993 US Journal, page 153.

S. multiflorum R. T. Clausen, M. Cházaro et al. 6487. Drawing by Rosa Maria Patiño B.

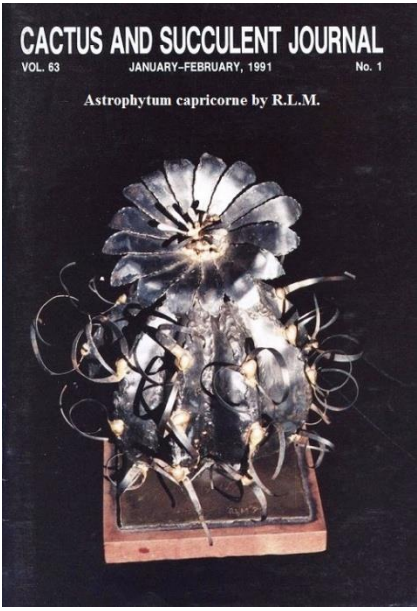
CACTUS AND SUCCULENT JOURNAL

VOL. 63 JULY-AUGUST, 1991 No. 4



ECHINOCEREUS HEMPELII FOBE, 1897

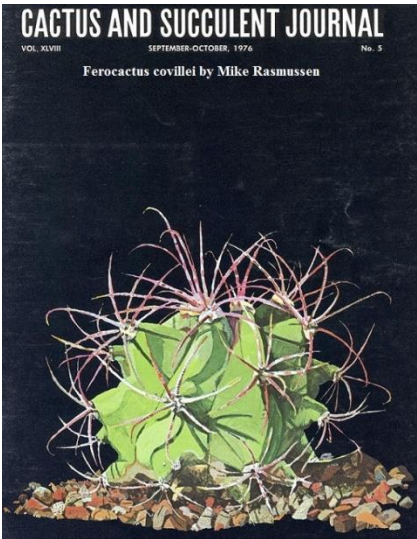
By Steven Plath



CACTUS AND SUCCULENT JOURNAL

VOL. 63 JANUARY-FEBRUARY, 1991 No. 1

Astrophytum capricorne by R.L.M.



CACTUS AND SUCCULENT JOURNAL

VOL. XLVIII SEPTEMBER-OCTOBER, 1976 No. 5

Ferocactus covillei by Mike Rasmussen



CACTUS AND SUCCULENT JOURNAL

VOL. 55 SEPTEMBER-OCTOBER 1983 No. 5

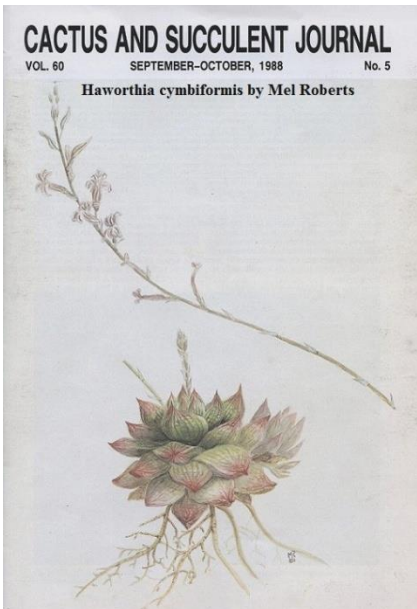
Haworthia cymbiformis by Mel Roberts



CACTUS AND SUCCULENT JOURNAL

VOL. 55 JULY-AUGUST 1983 NO. 4

Haworthia kingiana & H. pumila by Mel Roberts



CACTUS AND SUCCULENT JOURNAL

VOL. 60 SEPTEMBER-OCTOBER, 1988 No. 5

Haworthia cymbiformis by Mel Roberts



CACTUS AND SUCCULENT JOURNAL

VOL. XLIX MAY-JUNE, 1977 No. 3

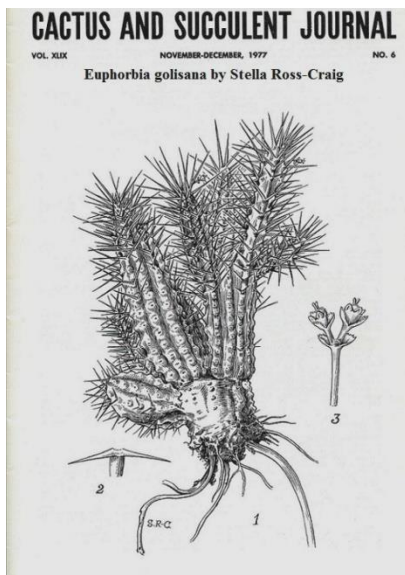
Pachypodium brevicaulis
MALAGASY



CACTUS AND SUCCULENT JOURNAL

VOL. 61 MARCH-APRIL, 1979 NO. 2

~Aloe rauhii~
Rosemary Roos



CACTUS AND SUCCULENT JOURNAL

VOL. XLIX NOVEMBER-DECEMBER, 1977 NO. 6

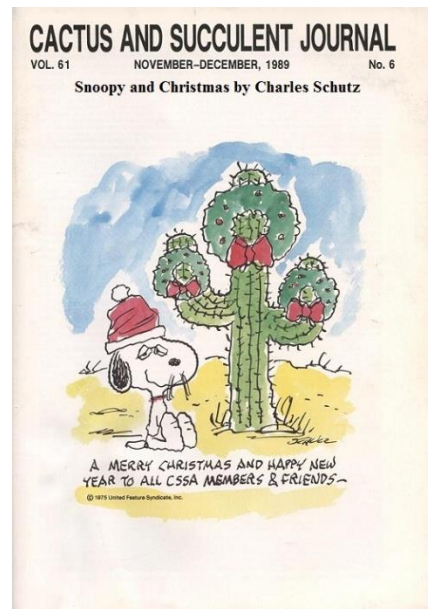
Euphorbia golisana by Stella Ross-Craig



Dracaena draco by Martin Schongauer between 1469 & 1474.

CACTUS AND SUCCULENT JOURNAL

VOL. XLVI NOVEMBER-DECEMBER, 1974 No. 6



CACTUS AND SUCCULENT JOURNAL

VOL. 61 NOVEMBER-DECEMBER, 1989 No. 6

Snoopy and Christmas by Charles Schutz

A MERRY CHRISTMAS AND HAPPY NEW YEAR TO ALL CSSA MEMBERS & FRIENDS~

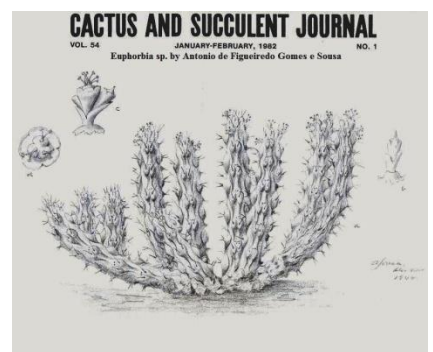
© 1979 United Feature Syndicate, Inc.



CACTUS AND SUCCULENT JOURNAL

VOL. XLIX MARCH-APRIL, 1977 No. 2

KALANCHOE COSTANTINII
Marguerite Scott 1976



CACTUS AND SUCCULENT JOURNAL

VOL. 64 JANUARY-FEBRUARY, 1982 NO. 1

Euphorbia sp. by Antonio de Figueiredo Gomes e Sousa